

# exakt

[exaktglass.com](http://exaktglass.com)

---

Glass Hardware and Railing Systems

Australia: +61 3 8400 4700 USA: +1 408 215 9396 UK: +44 20 3695 4912

## Product Catalogue

Version 16.1.03

[exaktglass.com](http://exaktglass.com)

# Contents

ABOUT EXAKT	PAGES 5 - 6
OUR DIFFERENCE	5
QUALITY ASSURANCE	5
WARRANTY	5
DESIGN, ENGINEERING AND TESTING	6
SHIPPING	6
PACKAGING	6
GLASS POOL FENCING	PAGES 6 - 15
SPIGOTS	6 - 7
HINGES	8 - 9
LATCHES	10 - 11
CLAMPS	12 - 15
GLASS BALUSTRADE	PAGES 16 - 34
SPIGOTS	16 - 17
STANDOFFS	18 - 21
50X10MM RAIL SYSTEM	22 - 25
25MM ROUND RAIL SYSTEM	26 - 28
25X21MM SQUARE RAIL SYSTEM	29 - 31
42.4MM ROUND RAILS SYSTEM	32 - 34

# Welcome to Exakt

## Our Difference

Exakt Group is an Australian-owned company with our own manufacturing facilities in China. We sell directly from the factory, cutting out the middle man and all associated costs.

This means you no longer have to liaise with overseas manufacturers, while still ensuring you get exactly what you need, for a reasonable cost and in a suitable timeframe.

### Our promise:

- All our glass hardware adheres to international standards
- All our hardware is fit for purpose
- All your product specifications are met through a detailed quality assurance process
- All Exakt products are engineered to high quality standards, tested, and certified

## Quality Assurance

Exakt Group employs our own team of QA staff at each factory in China. We also take time to inspect each unit against our key criteria:

- Material composition testing
- Surface finish
- Dimension tolerances
- Modular fit testing
- Standards adherence
- Packaging compliance
- Barcode readability
- Documentation accuracy

## Product Warranty

All Exakt products carry a full warranty on materials and workmanship. We take the necessary quality assurance steps to minimize your risk and ensure a smooth importing procedure from start to finish.

### Our guarantee

Full warranty on all materials and workmanship.

A warranty policy unlike any other Chinese factory.

In the unlikely event that you experience any issues with our products, we will replace it rapidly at our expense.



## Design. Engineered. Tested.

Exakt Group engineers focus heavily on designing high-quality products offered at a low cost.

Our unique development pipeline provides new product ideas that are not only appealing in design, but aim to make on-site installation faster, simpler, and cheaper.

Working closely with experienced consultant engineers and established industrial designers, we carefully assess the viability of all new products prior to their manufacture, ensuring they meet the necessary engineering parameters for robust design.

All our products are first tested in-house at our Melbourne testing facility. Only when we are satisfied do we seek third-party independent testing to meet the stringent Australian National Association of Testing Authorities (NATA) accreditation guidelines who are globally recognized.

## Reliable Shipping

We deliver on time and to your timeframe.

As you'll no doubt appreciate, the shipping component of an order is just as important as the product itself. Not only do you rely on your shipment to arrive when you need it, but timing is crucial for you to maintain positive customer relationships.

We utilize your chosen shipping agent, or work with our global freight forwarders to offer transparent, realistic timeframes that allow you to choose options that are financially viable or based on time constraints.

Exakt Group offers shipping in Multi-Modal Incoterms formats:

- Sea freight, FLC and LCL
- Air freight, bulk and express

## Custom Packaging

We offer a tailor-made packaging service to suit your every need.

From plain generic boxes to full-colour heat-sealed packaging, our packaging allows you to distribute directly from shipment to distribution to retail shopfront and every concept in between.

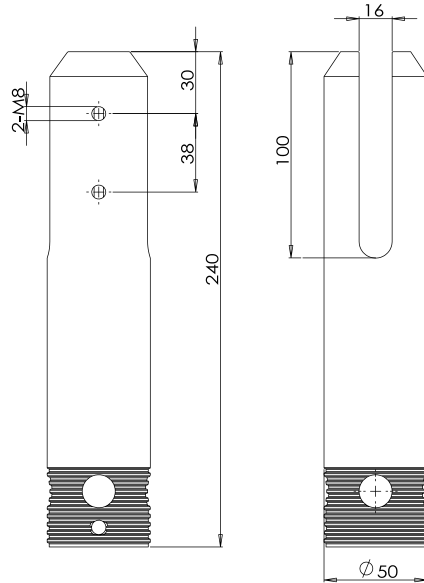
We are also able to build your product range and brand, by utilising our graphic design team. We create packaging artwork following your design style sheets, or can help you create a new concept altogether.

Types of Packaging:

- Generic - plain brown or white cardboard boxes with printed product labels
- Customer specific - plain or printed boxes, with or without logos, and customer specific item codes, with or without barcodes
- Retail point of sale- retail packaging requires different parameters to be shop floor ready directly from shipment. We can assist in creating heat sealed clamshell packaging

POOL FENCE SPIGOT ROUND 240MM

SF-PRC



Specifications

- Engineered for pool fencing
- Manufactured by investment casting
- Friction Fit, no holes in glass
- For use in core drilled applications
- Suits 12mm glass
- Integrated 1 piece EPDM gasket and pressure plate
- Available in mirror and brushed satin finishes
- Superior corrosion resistance with 2205 duplex stainless steel
- Flat cover ring included
- Tested to relevant standards at NATA accredited test facility

Related Products

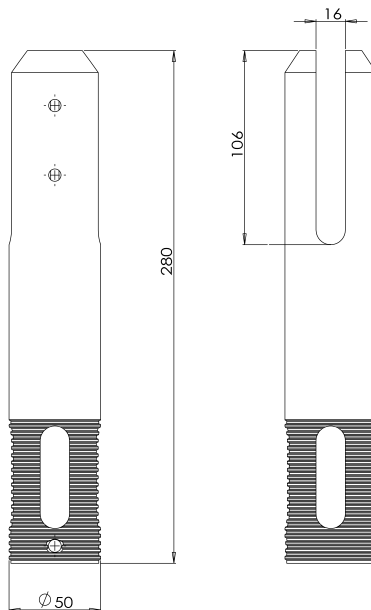


COV-FLAT-OR-IR

Dimensions	Materials	Testing	Order Codes	Packaging
Diameter 50mm Height 240mm	2205 Duplex Stainless Steel to ASTM A890	AS1926.1-2012	SF-PRC-P Mirror Polished SF-PRC-S Brushed Satin	Inner plastic sleeve & cardboard box Outer carton cardboard Shipping crate plywood base HD cardboard shipping sleeve

POOL FENCE SPIGOT ROUND 280MM

SF-PRC-XL



Specifications

- Engineered for pool fencing
- Manufactured by investment casting
- Friction Fit, no holes in glass
- For use in core drilled applications
- Suits 12mm glass
- Integrated 1 piece EPDM gasket and pressure plate
- Available in mirror and brushed satin finishes
- Superior corrosion resistance with 2205 duplex stainless steel
- Flat cover ring included
- Tested to relevant standards at NATA accredited test facility

Related Products



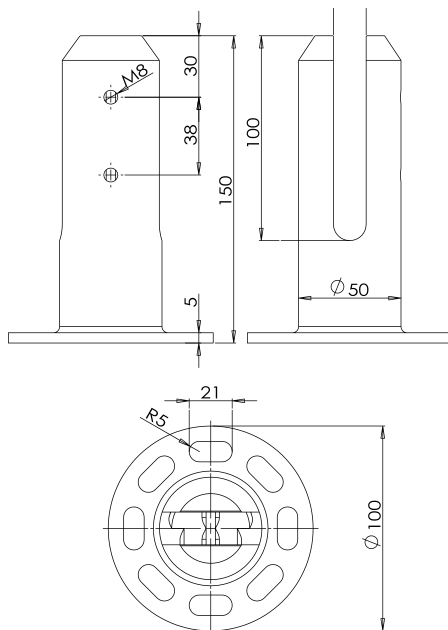
COV-FLAT-OR-IR

Dimensions	Materials	Testing	Order Codes	Packaging
Diameter 50mm Height 280mm Width 50x50mm	2205 Duplex Stainless Steel to ASTM A890	AS1926.1-2012	SF-PRC-XL-P Mirror Polished SF-PRC-XL-S Brushed Satin	Inner plastic sleeve & cardboard box Outer carton cardboard Shipping crate plywood base HD cardboard shipping sleeve



POOL FENCE SPIGOT ROUND FLANGED

SF-PRF



Specifications

- Engineered for pool fencing
- Manufactured by investment casting
- Friction Fit, no holes in glass
- For use in surface mounted applications
- Suits 12mm glass
- Integrated 1 piece EPDM gasket and pressure plate
- Available in mirror and brushed satin finishes
- Superior corrosion resistance with 2205 duplex stainless steel
- Domed cover ring included
- Tested to relevant standards at NATA accredited test facility
- Eccentric fixing holes in flange for rotational adjustment

Related Products

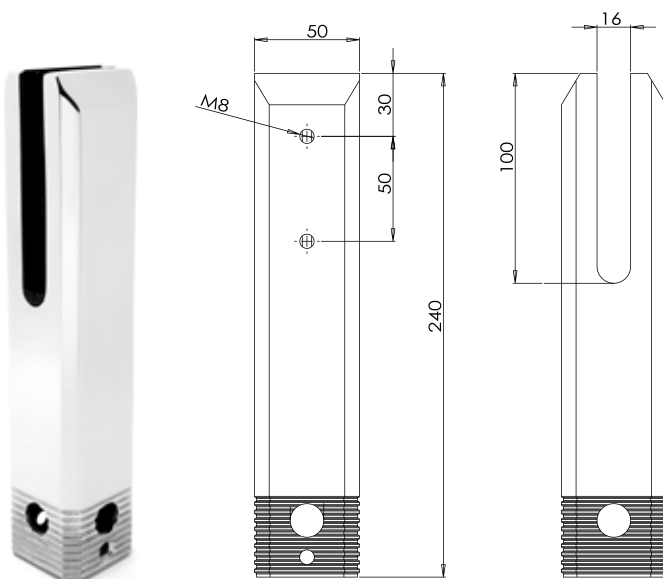


COV-DOM-OR-IR

Dimensions	Materials	Testing	Order Codes	Packaging
Diameter 50mm Height 150mm Flange 100mm	2205 Duplex Stainless Steel to ASTM A890	AS1926.1-2012	SF-PRF-P Mirror Polished SF-PRF-S Brushed Satin	Inner plastic sleeve & cardboard box Outer carton cardboard Shipping crate plywood base HD cardboard shipping sleeve

POOL FENCE SPIGOT SQUARE 240MM

SF-PSC



Specifications

- Engineered for pool fencing
- Manufactured by investment casting
- Friction Fit, no holes in glass
- For use in core drilled applications
- Suits 12mm glass
- Integrated 1 piece EPDM gasket and pressure plate
- Available in mirror and brushed satin finishes
- Superior corrosion resistance with 2205 duplex stainless steel
- Flat cover ring included
- Tested to relevant standards at NATA accredited test facility

Related Products



COV-FLAT-OS-IS

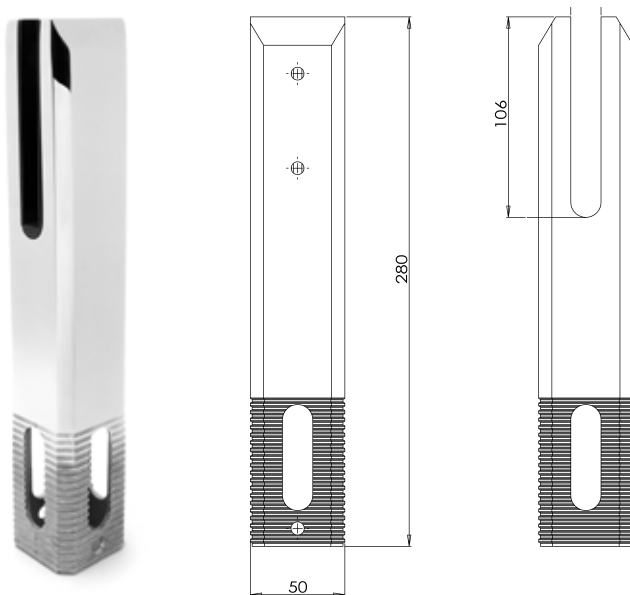


COV-FLAT-OR-IS

Dimensions	Materials	Testing	Order Codes	Packaging
Diameter 50x50mm Height 240mm Width 50x50mm	2205 Duplex Stainless Steel to ASTM A890	AS1926.1-2012	SF-PSC-P Mirror Polished SF-PSC-S Brushed Satin	Inner plastic sleeve & cardboard box Outer carton cardboard Shipping crate plywood base HD cardboard shipping sleeve

POOL FENCE SPIGOT SQUARE 280MM

SF-PSC-XL



Specifications

- Engineered for pool fencing
- Manufactured by investment casting
- Friction Fit, no holes in glass
- For use in core drilled applications
- Suits 12mm glass
- Integrated 1 piece EPDM gasket and pressure plate
- Available in mirror and brushed satin finishes
- Superior corrosion resistance with 2205 duplex stainless steel
- Flat cover ring included
- Tested to relevant standards at NATA accredited test facility

Related Products



COV-FLAT-OS-IS



COV-FLAT-OR-IS

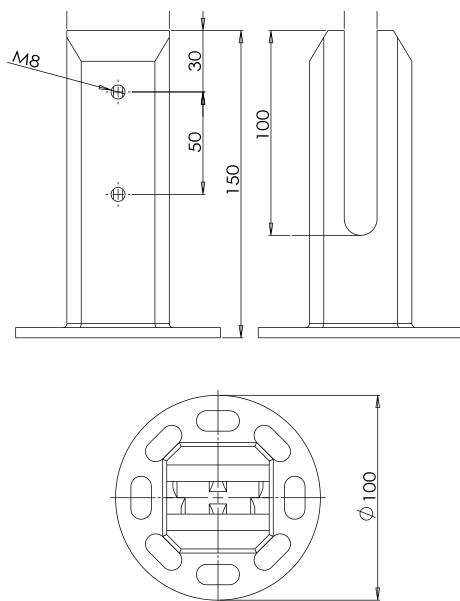
Dimensions	Materials	Testing	Order Codes	Packaging
Diameter 50x50mm Height 280mm Width 50x50mm	2205 Duplex Stainless Steel to ASTM A890	AS1926.1-2012	SF-PSC-P Mirror Polished SF-PSC-S Brushed Satin SF-PSC-XL-P Mirror Polished SF-PSC-XL-S Brushed Satin	Inner plastic sleeve & cardboard box Outer carton cardboard Shipping crate plywood base HD cardboard shipping sleeve





## POOL FENCE SPIGOT ROUND FLANGED

SF-PSF



### Specifications

- Engineered for pool fencing
- Manufactured by investment casting
- Friction Fit, no holes in glass
- For use in surface mounted applications
- Suits 12mm glass
- Integrated 1 piece EPDM gasket and pressure plate
- Available in mirror and brushed satin finishes
- Superior corrosion resistance with 2205 duplex stainless steel
- Domed cover ring included
- Tested to relevant standards at NATA accredited test facility
- Eccentric fixing holes in flange for rotational adjustment

### Related Products



COV-DOM-OR-IS

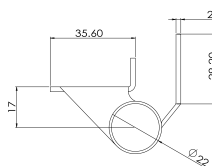
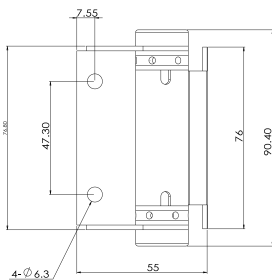


COV-DOM-OS-IS

Dimensions	Materials	Testing	Order Codes	Packaging
Diameter 50x50mm Height 150mm Flange 100mm	2205 Duplex Stainless Steel to ASTM A890	AS1926.1-2012	SF-PSF-P Mirror Polished SF-PSF-S Brushed Satin	Inner plastic sleeve & cardboard box Outer carton cardboard Shipping crate plywood base HD cardboard shipping sleeve

## SPRING HINGE WALL MOUNT

### HINGE-WALL



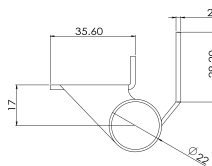
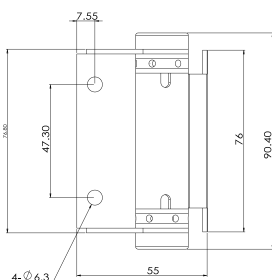
#### Specifications

- Suit glass gates 8-12mm
- Screw sets for 8-12mm gates
- Available in mirror and brushed satin finishes

Dimensions	Materials	Testing	Order Codes	Packaging
Hole Centers 47mm Shaft Diameter 22mm Glass Plates 76mm	316 Stainless Steel to ASTM A554		HINGE-WALL-P HINGE-WALL-S	Inner plastic sleeve & cardboard box Outer carton cardboard Shipping crate plywood base HD cardboard shipping sleeve

## SPRING HINGE ROUND POST

### HINGE-RND



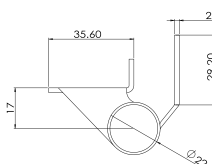
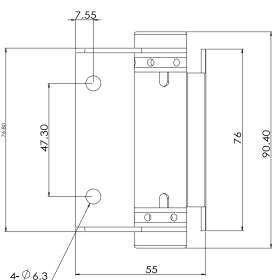
#### Specifications

- Suit glass gates 8-12mm
- Screw sets for 8-12mm gates
- Available in mirror and brushed satin finishes

Dimensions	Materials	Testing	Order Codes	Packaging
Hole Centers 47mm Shaft Diameter 22mm Glass Plates 76mm	316 Stainless Steel to ASTM A554		HINGE-ROUND-P HINGE-ROUND-S	Inner plastic sleeve & cardboard box Outer carton cardboard Shipping crate plywood base HD cardboard shipping sleeve

## SPRING HINGE GLASS TO GLASS INLINE

### HINGE-INLINE



#### Specifications

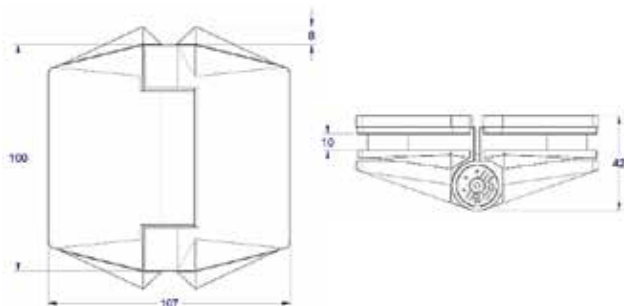
- Suit glass gates 8-12mm
- Screw sets for 8-12mm gates
- Available in mirror and brushed satin finishes

Dimensions	Materials	Testing	Order Codes	Packaging
Hole Centers 47mm Shaft Diameter 22mm Glass Plates 76mm	316 Stainless Steel to ASTM A554		HINGE-INLINE-P HINGE-INLINE-S	Inner plastic sleeve & cardboard box Outer carton cardboard Shipping crate plywood base HD cardboard shipping sleeve



## POLARIS SOFT CLOSE HINGE GLASS TO GLASS INLINE

### HINGE-POLARIS-INLINE



#### Specifications

- Manufactured by investment casting
- Suit glass gates and hinge panels in 12mm
- Soft Closing
- Cycle tested 10,000 times
- Adjustable spring tension
- Available in mirror and brushed satin finishes

Dimensions	Materials	Testing	Order Codes	Packaging
Height 100mm Width 50mm	2205 Duplex Stainless Steel to ASTM A890	AS1926-2012 AS2820	HINGE-POLARIS-INLINE-P HINGE-POLARIS-INLINE-S	Foam insert Cardboard box

## POLARIS SOFT CLOSE HINGE GLASS TO WALL

### HINGE-POLARIS-WALL



#### Specifications

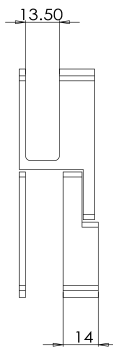
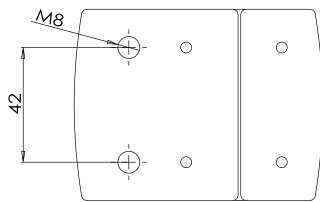
- Suit glass gates 8-12mm
- Screw sets for 8-12mm gates
- Available in mirror and brushed satin finishes

Dimensions	Materials	Testing	Order Codes	Packaging
Height 100mm Width 50mm	2205 Duplex Stainless Steel to ASTM A890	AS1926-2012 AS2820	HINGE-POLARIS-WALL-P HINGE-POLARIS-WALL-S	Foam insert Cardboard box

LATCH ASSEMBLY 180° INLINE D&D TECHNOLOGIES SIDE PULL LATCH



LATCH-INLINE-ASMBL



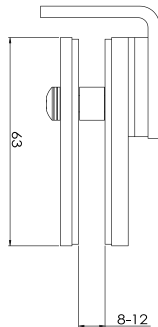
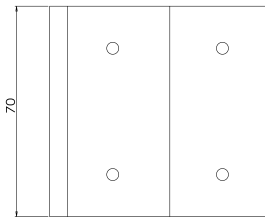
- Specifications**
- Manufactured by investment casting
  - Friction Fit to hinge panel, no holes in glass
  - Suits 8,10&12mm glass
  - Suit glass gates 8-12mm
  - Available in mirror and brushed satin finishes
  - Superior corrosion resistance with 2205 duplex stainless steel

Dimensions	Materials	Testing	Order Codes	Packaging
Gate plates 64x75mm Latch plates 40x75mm	2205 Duplex Stainless Steel to ASTM A890 Polymer Plastic		LATCH-INLINE-ASMBL-P LATCH-INLINE-ASMBL-S	Inner plastic sleeve & cardboard box Outer carton cardboard Shipping crate plywood base HD cardboard shipping sleeve

LATCH ASSEMBLY WALL/POST MOUNTED D&D TECHNOLOGIES SIDE PULL LATCH



LATCH-WALL-ASMBL



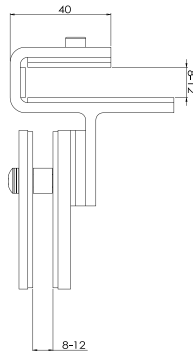
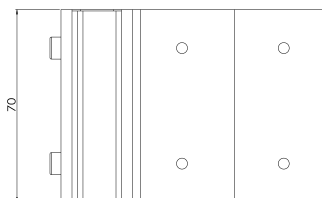
- Specifications**
- Suit glass gates 8-12mm
  - Screw sets for 8-12mm gates
  - Available in mirror and brushed satin finishes

Dimensions	Materials	Testing	Order Codes	Packaging
Gate plates 64x75mm Latch plates 40x75mm	2205 Duplex Stainless Steel to ASTM A890 Polymer Plastic		LATCH-WALL-ASMBL-P LATCH-WALL-ASMBL-S	Inner plastic sleeve & cardboard box Outer carton cardboard Shipping crate plywood base HD cardboard shipping sleeve

LATCH ASSEMBLY CORNER OUT D&D TECHNOLOGIES SIDE PULL LATCH



LATCH-CRN OUT-ASMBL



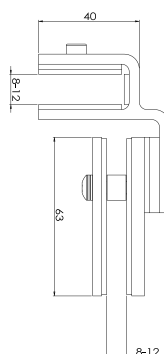
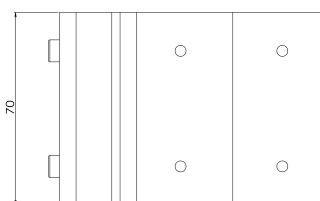
- Specifications**
- Suit glass gates 8-12mm
  - Screw sets for 8-12mm gates
  - Available in mirror and brushed satin finishes

Dimensions	Materials	Testing	Order Codes	Packaging
Gate plates 64x75mm Latch plates 40x75mm	2205 Duplex Stainless Steel to ASTM A890 Polymer Plastic		LATCH-CRN OUT-ASMBL-P LATCH-CRN OUT-ASMBL-S	Inner plastic sleeve & cardboard box Outer carton cardboard Shipping crate plywood base HD cardboard shipping sleeve

## LATCH ASSEMBLY CORNER IN D&D TECHNOLOGIES SIDE PULL LATCH



### LATCH-CRN IN-ASMBL



#### Specifications

- Manufactured by investment casting
- Friction Fit to hinge panel, no holes in glass
- Suits 8,10&12mm glass
- Suit glass gates 8-12mm
- Available in mirror and brushed satin finishes
- Superior corrosion resistance with 2205 duplex stainless steel

Dimensions	Materials	Testing	Order Codes	Packaging
Gate plates 64x75mm Latch plates 40x75mm	2205 Duplex Stainless Steel to ASTM A890 Polymer Plastic		LATCH-CRN IN-ASMBL-P LATCH-CRN IN-ASMBL-S	Inner plastic sleeve & cardboard box Outer carton cardboard Shipping crate plywood base HD cardboard shipping sleeve

## LATCH ASSEMBLY ROUND POST D&D TECHNOLOGIES SIDE PULL LATCH



### LATCH-RND-ASMBL



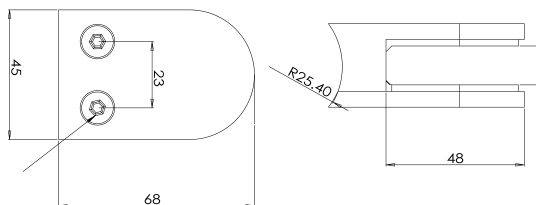
#### Specifications

- Suit glass gates 8-12mm
- Screw sets for 8-12mm gates
- Available in mirror and brushed satin finishes

Dimensions	Materials	Testing	Order Codes	Packaging
Gate plates 64x75mm Latch plates 40x75mm	2205 Duplex Stainless Steel to ASTM A890 Polymer Plastic		LATCH-RND-ASMBL-P LATCH-RND-ASMBL-S	Inner plastic sleeve & cardboard box Outer carton cardboard Shipping crate plywood base HD cardboard shipping sleeve

GLASS CLAMP D-SHAPE 50.8 - RADIUS BACK

GC-D-RADIUS



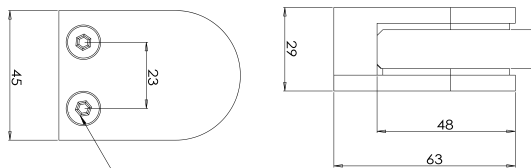
Specifications

- Manufactured by investment casting
- Friction Fit, no holes in glass
- Suits 8, 10 & 12mm glass
- Gaskets 8, 10 & 12mm glass
- Available in mirror and brushed satin finishes
- Superior corrosion resistance with 316 or 2205 duplex stainless steel

Dimensions	Materials	Testing	Order Codes	Packaging
Length 63mm Height 45mm Width 29mm	316 Stainless Steel to ASTM A554	n/a	GC-D-RADIUS-P Mirror Polish GC-D-RADIUS-S Brushed Satin	Inner plastic sleeve & cardboard box Outer carton cardboard Shipping crate plywood base HD cardboard shipping sleeve

GLASS CLAMP D-SHAPE FLAT BACK

GC-D-FLAT



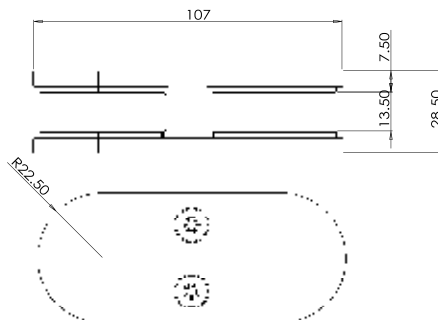
Specifications

- Manufactured by investment casting
- Friction Fit, no holes in glass
- Suits 8, 10 & 12mm glass
- Gaskets 8, 10 & 12mm glass
- Available in mirror and brushed satin finishes
- Superior corrosion resistance with 316 or 2205 duplex stainless steel

Dimensions	Materials	Testing	Order Codes	Packaging
Length 68mm Height 45mm Width 29mm	316 Stainless Steel to ASTM A554	n/a	GC-D-FLAT-P Mirror Polish GC-D-FLAT-S Brushed Satin	Inner plastic sleeve & cardboard box Outer carton cardboard Shipping crate plywood base HD cardboard shipping sleeve

GLASS CLAMP D-SHAPE 180° JOINER

GC-D-JNR



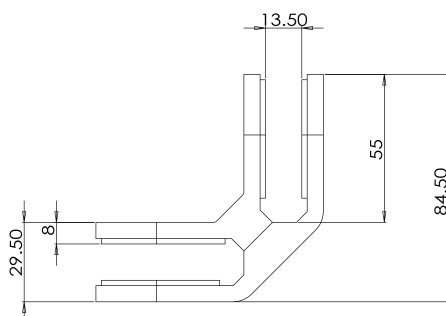
Specifications

- Manufactured by investment casting
- Friction Fit, no holes in glass
- Suits 8,10&12mm glass
- Gaskets 8,10&12mm glass
- Available in mirror and brushed satin finishes
- Superior corrosion resistance with 316 or 2205 duplex stainless steel

Dimensions	Materials	Testing	Order Codes	Packaging
Length 107mm Height 45mm Width 29mm	316 Stainless Steel to ASTM A554	n/a	GC-D-JNR-P Mirror Polish GC-D-JNR-S Brushed Satin	Inner plastic sleeve & cardboard box Outer carton cardboard Shipping crate plywood base HD cardboard shipping sleeve

## GLASS CLAMP D-SHAPE 90° CORNER

### GC-D-CRN



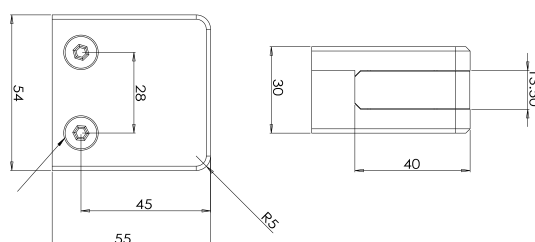
#### Specifications

- Manufactured by investment casting
- Friction Fit, no holes in glass
- Suits 8, 10 & 12mm glass
- Gaskets 8, 10 & 12mm glass
- Available in mirror and brushed satin finishes
- Superior corrosion resistance with 316 or 2205 duplex stainless steel

Dimensions	Materials	Testing	Order Codes	Packaging
Length 84mm Height 45mm Width 29mm	316 Stainless Steel to ASTM A554	n/a	GC-D-CRN-P Mirror Polish GC-D-CRN-S Brushed Satin	Inner plastic sleeve & cardboard box Outer carton cardboard Shipping crate plywood base HD cardboard shipping sleeve

## GLASS CLAMP SQUARE FLAT BACK

### GC-SQ-FLAT



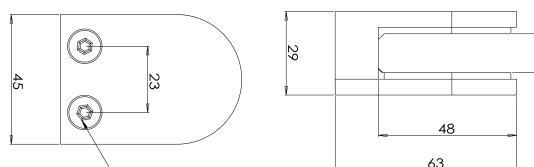
#### Specifications

- Manufactured by investment casting
- Friction Fit, no holes in glass
- Suits 8, 10 & 12mm glass
- Gaskets 8, 10 & 12mm glass
- Available in mirror and brushed satin finishes
- Superior corrosion resistance with 316 or 2205 duplex stainless steel

Dimensions	Materials	Testing	Order Codes	Packaging
Length 55mm Height 54mm Width 30mm	316 Stainless Steel to ASTM A554	n/a	GC-SQ-FLAT-P Mirror Polish GC-SQ-FLAT-P Brushed Satin	Inner plastic sleeve & cardboard box Outer carton cardboard Shipping crate plywood base HD cardboard shipping sleeve

## GLASS CLAMP SQUARE 50.8 - RADIUS BACK

### GC-SQ-RADIUS



#### Specifications

- Manufactured by investment casting
- Friction Fit, no holes in glass
- Suits 8, 10 & 12mm glass
- Gaskets 8, 10 & 12mm glass
- Available in mirror and brushed satin finishes
- Superior corrosion resistance with 316 or 2205 duplex stainless steel

Dimensions	Materials	Testing	Order Codes	Packaging
Length 60mm Height 54mm Width 30mm	316 Stainless Steel to ASTM A554	n/a	GC-SQ-RADIUS-P Mirror Polish GC-SQ-RADIUS-P Brushed Satin	Inner plastic sleeve & cardboard box Outer carton cardboard Shipping crate plywood base HD cardboard shipping sleeve

## GLASS CLAMP 180° INLINE JOINER 75MM

GC-JNR-75



### Specifications

- Manufactured by investment casting
- Friction Fit, no holes in glass
- Suits 12mm glass
- Available in mirror and brushed satin finishes
- Superior corrosion resistance with 316 or 2205 duplex stainless steel

Dimensions	Materials	Testing	Order Codes	Packaging
Length 60mm Height 54mm Width 29mm	316 Stainless Steel to ASTM A554	n/a	GC-JNR-75-P Mirror Polish GC-JNR-75-S Brushed Satin	Inner plastic sleeve & cardboard box Outer carton cardboard Shipping crate plywood base HD cardboard shipping sleeve

## GLASS CLAMP 180° INLINE JOINER 100MM

GC-JNR-100



### Specifications

- Manufactured by investment casting
- Friction Fit, no holes in glass
- Suits 12mm glass
- Available in mirror and brushed satin finishes
- Superior corrosion resistance with 316 or 2205 duplex stainless steel

Dimensions	Materials	Testing	Order Codes	Packaging
Length 100mm Height 26mm Width 25mm	316 Stainless Steel to ASTM A554	n/a	GC-JNR-100-P Mirror Polish GC-JNR-100-S Brushed Satin	Inner plastic sleeve & cardboard box Outer carton cardboard Shipping crate plywood base HD cardboard shipping sleeve

## GLASS CLAMP 180° INLINE JOINER 140MM

GC-JNR-140



### Specifications

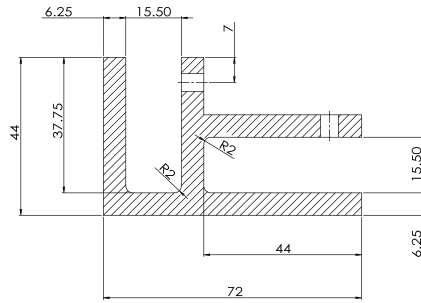
- Manufactured by investment casting
- Friction Fit, no holes in glass
- Suits 12mm glass
- Available in mirror and brushed satin finishes
- Superior corrosion resistance with 316 or 2205 duplex stainless steel

Dimensions	Materials	Testing	Order Codes	Packaging
Length 140mm Height 26mm Width 25mm	316 Stainless Steel to ASTM A554	n/a	GC-JNR-140-P Mirror Polish GC-JNR-140-S Brushed Satin	Inner plastic sleeve & cardboard box Outer carton cardboard Shipping crate plywood base HD cardboard shipping sleeve



## GLASS CLAMP 90° CORNER

### GC-CRN



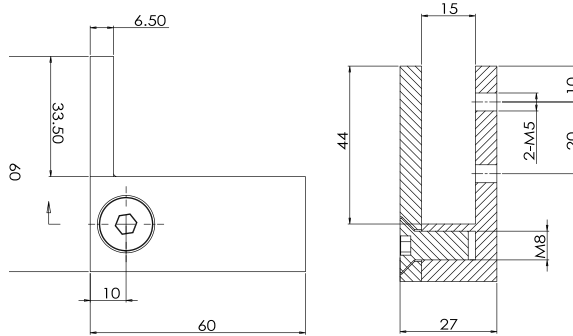
#### Specifications

- Manufactured by investment casting
- Friction Fit, no holes in glass
- Suits 12mm glass
- Available in mirror and brushed satin finishes
- Superior corrosion resistance with 316 or 2205 duplex stainless steel

Dimensions	Materials	Testing	Order Codes	Packaging
Length 72mm Height 26mm Width 72mm	316 Stainless Steel to ASTM A554	n/a	GC-CRN-P Mirror Polish GC-CRN-S Brushed Satin	Inner plastic sleeve & cardboard box Outer carton cardboard Shipping crate plywood base HD cardboard shipping sleeve

## GLASS CLAMP WALL TIE

### GC-WALL



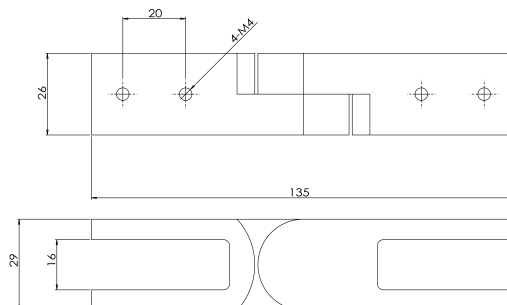
#### Specifications

- Manufactured by investment casting
- Friction Fit, no holes in glass
- Suits 12mm glass
- Available in mirror and brushed satin finishes
- Superior corrosion resistance with 316 or 2205 duplex stainless steel

Dimensions	Materials	Testing	Order Codes	Packaging
Length 60mm Height 60mm Width 27mm	316 Stainless Steel to ASTM A554	n/a	GC-WALL-P Mirror Polish GC-WALL-S Brushed Satin	Inner plastic sleeve & cardboard box Outer carton cardboard Shipping crate plywood base HD cardboard shipping sleeve

## GLASS CLAMP CORNER ADJUSTABLE

### GC-CRN ADJ



#### Specifications

- Manufactured by investment casting
- Friction Fit, no holes in glass
- Suits 12mm glass
- Available in mirror and brushed satin finishes
- Superior corrosion resistance with 316 or 2205 duplex stainless steel

Dimensions	Materials	Testing	Order Codes	Packaging
Length 135mm Height 26mm Width 29mm	316 Stainless Steel to ASTM A554	n/a	GC-CRN ADJ-P Mirror Polish GC-CRN ADJ-S Brushed Satin	Inner plastic sleeve & cardboard box Outer carton cardboard Shipping crate plywood base HD cardboard shipping sleeve

## GLASS CLAMP WALL TIE SMALL

### GC-WALL-SM



#### Specifications

- Manufactured by investment casting
- Friction Fit, no holes in glass
- Suits 12mm glass
- Available in mirror and brushed satin finishes
- Superior corrosion resistance with 316 or 2205 duplex stainless steel

Dimensions	Materials	Testing	Order Codes	Packaging
	316 Stainless Steel to ASTM A554	n/a	GC-WALL-SM-P Mirror Polish GC-WALL-SM-S Brushed Satin	Inner plastic sleeve & cardboard box Outer carton cardboard Shipping crate plywood base HD cardboard shipping sleeve

## GLASS CLAMP CORNER ADJUSTABLE SMALL

### GC-CRN ADJ-SM



#### Specifications

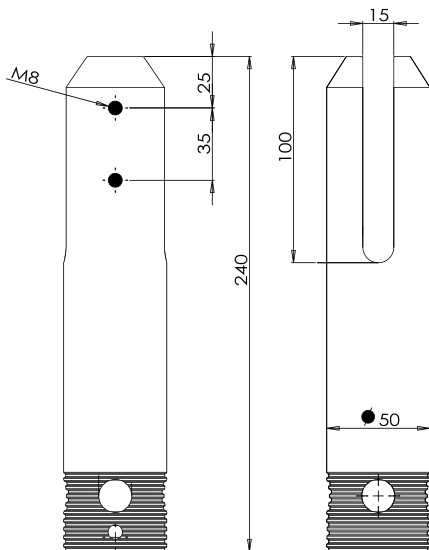
- Manufactured by investment casting
- Friction Fit, no holes in glass
- Suits 12mm glass
- Available in mirror and brushed satin finishes
- Superior corrosion resistance with 316 or 2205 duplex stainless steel

Dimensions	Materials	Testing	Order Codes	Packaging
	316 Stainless Steel to ASTM A554	n/a	GC-CRN ADJ-SM-P Mirror Polish GC-CRN ADJ-SM-S Brushed Satin	Inner plastic sleeve & cardboard box Outer carton cardboard Shipping crate plywood base HD cardboard shipping sleeve



## FRICITION SPIGOT BALUSTRADE ROUND CORE DRILLED

SF-RRC



### Specifications

- Engineered for balustrade/railing
- Manufactured by investment casting
- Friction Fit, no holes in glass
- For use in core drilled applications
- Suits 12mm glass
- Integrated 1 piece EPDM gasket and pressure plate
- Available in mirror and brushed satin finishes
- Superior corrosion resistance with 2205 duplex stainless steel
- Flat cover ring included
- Tested to relevant standards at NATA accredited test facility

### Related Products

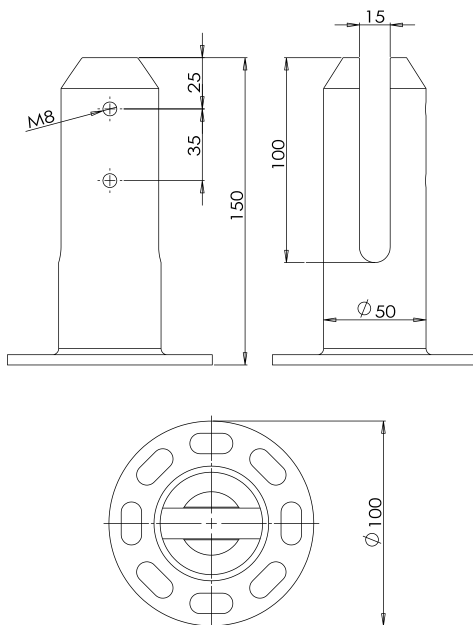


COV-FLAT-OR-IR

Dimensions	Materials	Testing	Order Codes	Packaging
Diameter 50mm Height 240mm	2205 Duplex Stainless Steel to ASTM A890	AS/NZS 1170.1:2002 AS 1288-2006 Sect 7.2.3 NZS 3604:2011	SF-RRC-P Mirror Polished SF-RRC-S Brushed Satin	Inner plastic sleeve & cardboard box Outer carton cardboard Shipping crate plywood base HD cardboard shipping sleeve

## FRICITION SPIGOT BALUSTRADE ROUND FLANGED

SF-RRF



### Specifications

- Engineered for balustrade/railing
- Manufactured by investment casting
- Friction Fit, no holes in glass
- For use in surface mounted applications
- Suits 12mm glass
- Integrated 1 piece EPDM gasket and pressure plate
- Available in mirror and brushed satin finishes
- Superior corrosion resistance with 2205 duplex stainless steel
- Domed cover ring included
- Tested to relevant standards at NATA accredited test facility
- Eccentric fixing holes in flange for rotational adjustment

### Related Products

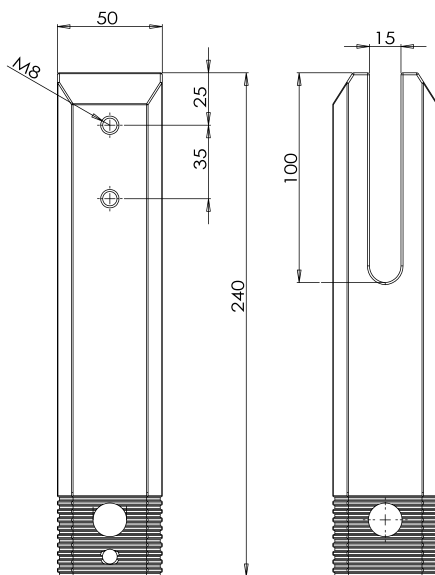


COV-FLAT-OR-IR

Dimensions	Materials	Testing	Order Codes	Packaging
Diameter 50mm Height 150mm Flange 100mm	2205 Duplex Stainless Steel to ASTM A890	AS/NZS 1170.1:2002 AS 1288-2006 Sect 7.2.3 NZS 3604:2011	SF-RRF-P Mirror Polished SF-RRF-S Brushed Satin	Inner plastic sleeve & cardboard box Outer carton cardboard Shipping crate plywood base HD cardboard shipping sleeve

## FRICITION SPIGOT BALUSTRADE SQUARE CORE DRILLED

### SF-RSC



#### Specifications

- Engineered for balustrade/railing
- Manufactured by investment casting
- Friction Fit, no holes in glass
- For use in core drilled applications
- Suits 12mm glass
- Integrated 1 piece EPDM gasket and pressure plate
- Available in mirror and brushed satin finishes
- Superior corrosion resistance with 2205 duplex stainless steel
- Flat cover ring included
- Tested to relevant standards at NATA accredited test facility

#### Related Products



COV-FLAT-OS-IS

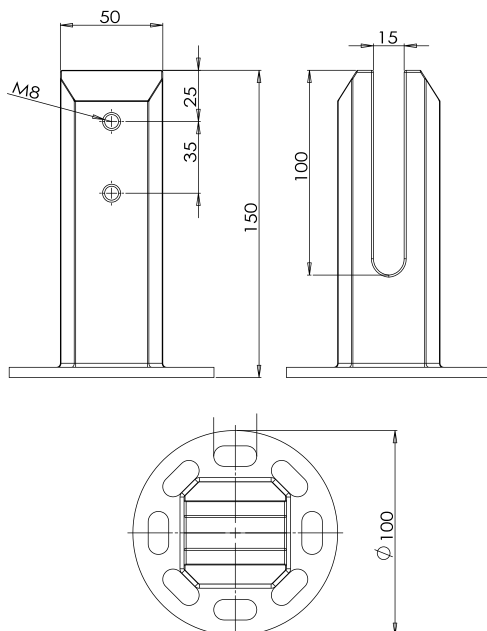


COV-FLAT-OR-IS

Dimensions	Materials	Testing	Order Codes	Packaging
Diameter 50x50mm Height 240mm Width 50x50mm	2205 Duplex Stainless Steel to ASTM A890	AS/NZS 1170:2002 AS 1288-2006 Sect 7.2.3 NZS 3604:2011	SF-RSC-P Mirror Polished SF-RSC-S Brushed Satin	Inner plastic sleeve & cardboard box Outer carton cardboard Shipping crate plywood base HD cardboard shipping sleeve

## FRICITION SPIGOT BALUSTRADE SQUARE FLANGED

### SF-RSF



#### Specifications

- Engineered for balustrade/railing
- Manufactured by investment casting
- Friction Fit, no holes in glass
- For use in surface mounted applications
- Suits 12mm glass
- Integrated 1 piece EPDM gasket and pressure plate
- Available in mirror and brushed satin finishes
- Superior corrosion resistance with 2205 duplex stainless steel
- Domed cover ring included
- Tested to relevant standards at NATA accredited test facility
- Eccentric fixing holes in flange for rotational adjustment

#### Related Products



COV-DOM-OR-IS

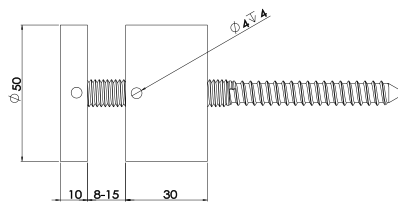


COV-DOM-OS-IS

Dimensions	Materials	Testing	Order Codes	Packaging
Diameter 50x50mm Height 150mm Flange 100mm	2205 Duplex Stainless Steel to ASTM A890	AS1926.1-2012	SF-RSF-P Mirror Polished SF-RSF-S Brushed Satin	Inner plastic sleeve & cardboard box Outer carton cardboard Shipping crate plywood base HD cardboard shipping sleeve

## STANDOFF ASSEMBLY 50MM DIA. X 30MM ADJUSTABLE

SO-ASSEMBLY ADJ-5030



### Specifications

- Manufactured by CNC Machining
- Plumb adjustment up to 10mm
- Fixing by central M10 thread or 4 x outer fixing holes
- Fast on-site installation
- Available in mirror and brushed satin finishes
- Pre assembled kits with bushes and washers



Dimensions	Materials	Testing	Order Codes	Packaging
Diameter 50mm Length 30mm	316 Stainless Steel to ASTM A554	AS/NZS 1170.1-2002 AS 1288-2006 Sect 7.2.3 NZS 3604:2011	SO-ASSEMBLY ADJ-5030-P SO-ASSEMBLY ADJ-5030-S	Inner plastic sleeve & cardboard box

## STANDOFF ASSEMBLY 38MM DIA. X 30MM ADJUSTABLE

SO-ASSEMBLY ADJ-3830



### Specifications

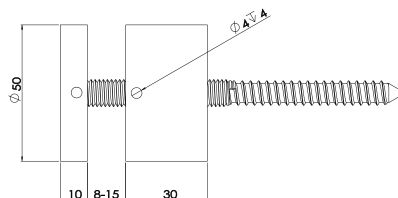
- Manufactured by CNC Machining
- Plumb adjustment up to 10mm
- Fixing by central M10 thread or 4 x outer fixing holes
- Fast on-site installation
- Available in mirror and brushed satin finishes
- Pre assembled kits with bushes and washers



Dimensions	Materials	Testing	Order Codes	Packaging
Diameter 38mm Length 30mm	316 Stainless Steel to ASTM A554	AS/NZS 1170.1-2002 AS 1288-2006 Sect 7.2.3 NZS 3604:2011	SO-ASSEMBLY ADJ-3830-P SO-ASSEMBLY ADJ-3830-S	Inner plastic sleeve & cardboard box

## STANDOFF ASSEMBLY 50MM DIA. X 30MM

SO-ASSEMBLY-5030



### Specifications

- Manufactured by CNC Machining
- Fixing by central M10 thread or 2 x outer fixing holes
- Available in mirror and brushed satin finishes
- Pre assembled kits with bushes and washers



Dimensions	Materials	Testing	Order Codes	Packaging
Diameter 50mm Length 30mm	2205 Duplex Stainless Steel to ASTM A890 Polymer Plastic	AS/NZS 1170.1-2002 AS 1288-2006 Sect 7.2.3 NZS 3604:2011	SO-ASSEMBLY-5030-P SO-ASSEMBLY-5030-S	Inner plastic sleeve & cardboard box

## STANDOFF ASSEMBLY 38MM DIA. X 30MM

SO-ASSEMBLY-3830



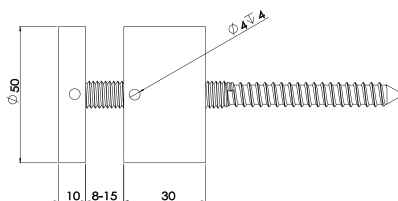
### Specifications

- Manufactured by CNC Machining
- Fixing by central M10 thread or 2 x outer fixing holes
- Available in mirror and brushed satin finishes
- Pre assembled kits with bushes and washers

Dimensions	Materials	Testing	Order Codes	Packaging
Diameter 38mm Length 30mm	316 Stainless Steel to ASTM A554	AS/NZS 1170.1:2002 AS 1288-2006 Sect 7.2.3 NZS 3604:2011	SO-ASSEMBLY-3830-P SO-ASSEMBLY-3830-	Inner plastic sleeve & cardboard box

## STANDOFF ASSEMBLY 50MM DIA. X 30MM LIGHT WEIGHT CASTING

SO-ASSEMBLY C-5030



### Specifications

- Manufactured by investment casting
- Fixing by central M10 thread
- Available in mirror and brushed satin finishes
- Pre assembled kits with bushes and washers

Dimensions	Materials	Testing	Order Codes	Packaging
Diameter 50mm Length 30mm	316 Stainless Steel to ASTM A554	AS/NZS 1170.1:2002 AS 1288-2006 Sect 7.2.3 NZS 3604:2011	SO-ASSEMBLY C-5030-P SO-ASSEMBLY C-5030-S	Inner plastic sleeve & cardboard box

## STANDOFF LAG SCREW M10 x 75MM

SO-LAG M10-75



Dimensions	Materials	Testing	Order Codes	Packaging
Diameter M10 Length 75mm	2205 Duplex Stainless Steel to ASTM A890 Polymer Plastic	n/a	SO-LAG M10-75	Inner plastic sleeve & cardboard box

## STANDOFF LAG SCREW M10 x 120MM

SO-LAG M10-120



Dimensions	Materials	Testing	Order Codes	Packaging
Diameter M10 Length 120mm	316 Stainless Steel to ASTM A554	n/a	SO-LAG M10-120	Inner plastic sleeve & cardboard box

## STANDOFF TAPER SCREW 50MM

SO-SCREW TAPER 50



Dimensions	Materials	Testing	Order Codes	Packaging
Diameter 14 Gauge Length 50mm	316 Stainless Steel to ASTM A554	n/a	SO-SCREW TAPER 50	Inner plastic sleeve & cardboard box

## STANDOFF STUDS M10

SO-STUD M10



Dimensions	Materials	Testing	Order Codes	Packaging
M10 in lengths to order	316 Stainless Steel to ASTM A554	n/a	SO-STUD M10	Inner plastic sleeve & cardboard box



## STANDOFF WASHER 38MM DIA.

SO-WASHER-38



Dimensions	Materials	Testing	Order Codes	Packaging
Diameter 38mm Thickness 1mm	Plastic	n/a	SO-WASHER-38	Inner plastic sleeve & cardboard box

## STANDOFF WASHER 50MM DIA.

SO-WASHER-50



Dimensions	Materials	Testing	Order Codes	Packaging
Diameter 50mm Thickness 1mm	Plastic	n/a	SO-WASHER-50	Inner plastic sleeve & cardboard box

## STANDOFF BUSH M10

SO-BUSH M10



Dimensions	Materials	Testing	Order Codes	Packaging
Outer Dia. 12mm Inner Dia. M10 Length 8mm	Plastic	n/a	SO-BUSH M10	Inner plastic sleeve & cardboard box

50X10MM SYSTEM

42.4MM SLOT RAIL

RAIL-5010



Specifications

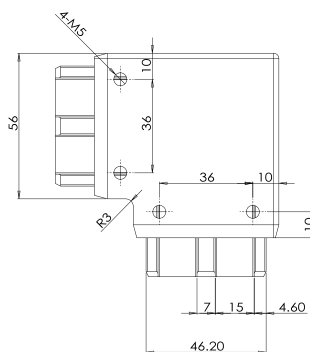
- Superior quality coil for higher quality surface finish
- Precision roll forming for dimensional accuracy
- Precision welding for higher strength
- Uniform automated polishing
- Available in mirror and brushed satin finishes

Dimensions	Materials	Testing	Order Codes	Packaging
Diameter 42.4mm Slot 24x24mm Wall Thickness 1.5mm	316 Stainless Steel to ASTM A554	ASNZ1288-2006	RAIL-42.4 SLOT-P RAIL-42.4 SLOT-S	Plastic wrapping Cardboard sleeve

50X10MM SYSTEM

BALUSTRADE MODULAR CORNER

B5010P-CNR



Specifications

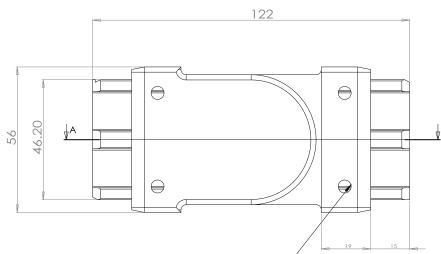
- For use with 50x10mm handrail
- Manufactured by investment casting
- No weld rail connections
- Fast on-site assembly
- No exposed tube cuts

Dimensions	Materials	Testing	Order Codes	Packaging
Length 71mm Thickness 16mm Rail Slot 50X10mm	316 Stainless Steel to ASTM A890	n/a	B5010P-CNR-P Mirror Polish B5010P-CNR-S Brushed Satin	Inner plastic sleeve & cardboard box Outer carton cardboard Shipping crate plywood base HD cardboard shipping sleeve

50X10MM SYSTEM

BALUSTRADE MODULAR ADJUSTABLE CORNER

B5010P-ADJ CNR



Specifications

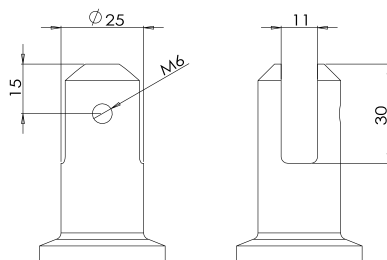
- For use with 50x10mm handrail
- Manufactured by investment casting
- No weld rail connections
- Fast on-site assembly

Dimensions	Materials	Testing	Order Codes	Packaging
Length 122mm Height 16mm Width 56mm	316 Stainless Steel to ASTM A890	n/a	B5010-ADJ CRN-P Mirror Polish B5010-ADJ CRN-P Brushed Satin	Inner plastic sleeve & cardboard box Outer carton cardboard Shipping crate plywood base HD cardboard shipping sleeve

## 50X10MM SYSTEM

## BALUSTRADE STANDOFF

### B5010-SO-TAPER



#### Specifications

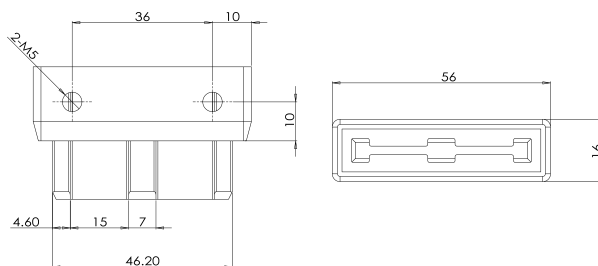
- For use with 50x10mm handrail
- Manufactured by investment casting
- No fabrication handrail connection
- Fast on-site assembly
- Slimline rail with uninterrupted balcony views

Dimensions	Materials	Testing	Order Codes	Packaging
Length 75mm Outer Dia. 38mm Rail Slot Dia. 25mm	316 Stainless Steel to ASTM A890	n/a	B5010-SO-TAPER-P Mirror Polish B5010-SO-TAPER-S Brushed Satin	Inner plastic sleeve & cardboard box Outer carton cardboard Shipping crate plywood base HD cardboard shipping sleeve

## 50X10MM SYSTEM

## BALUSTRADE MODULAR END CAP

### B5010P-END



#### Specifications

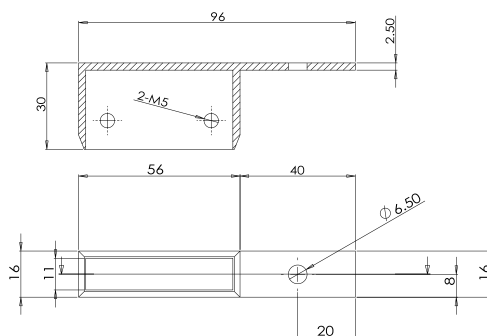
- For use with 50x10mm handrail
- Manufactured by investment casting
- No weld rail connections
- Fast on-site assembly
- No exposed tube cuts

Dimensions	Materials	Testing	Order Codes	Packaging
Length 34mm Height 16mm Width 56mm	316 Stainless Steel to ASTM A890	n/a	B5010-END-P Mirror Polish B5010-END-P Brushed Satin	Inner plastic sleeve & cardboard box Outer carton cardboard Shipping crate plywood base HD cardboard shipping sleeve

## 50X10MM SYSTEM

## BALUSTRADE MODULAR WALL TIE OFFSET 40MM

### B5010P-EXT40



#### Specifications

- For use with 50x10mm handrail
- Manufactured by investment casting
- No weld rail connections
- Fast on-site assembly
- No exposed tube cuts

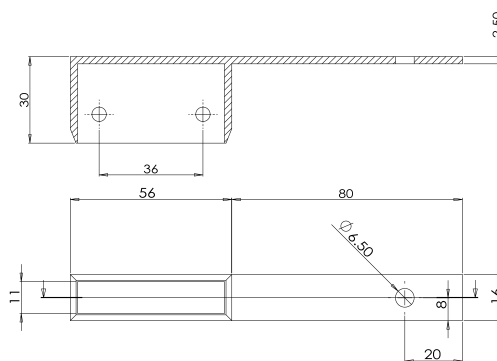
Dimensions	Materials	Testing	Order Codes	Packaging
Length 30mm Height 37mm Width 96mm	316 Stainless Steel to ASTM A890	n/a	B5010P-EXT80-P Mirror Polish B5010P-EXT80-S Brushed Satin	Inner plastic sleeve & cardboard box Outer carton cardboard Shipping crate plywood base HD cardboard shipping sleeve

50X10MM SYSTEM

BALUSTRADE MODULAR WALL TIE OFFSET 80MM



B5010P-EXT80



Specifications

- For use with 50x10mm handrail
- Manufactured by investment casting
- No weld rail connections
- Fast on-site assembly
- No exposed tube cuts

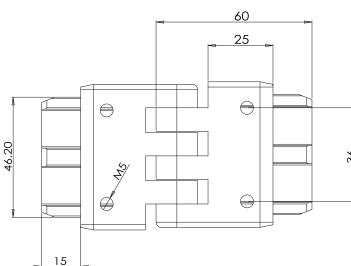
Dimensions	Materials	Testing	Order Codes	Packaging
Length 30mm Height 16mm Width 136mm	316 Stainless Steel to ASTM A554	ASNZ1288-2006	B5010P-EXT80-P Mirror Polish B5010P-EXT80-S Brushed Satin	Plastic wrapping Cardboard sleeve

50X10MM SYSTEM

BALUSTRADE MODULAR ADJUSTABLE UP



B5010P-HGT ADJ



Specifications

- For use with 50x10mm handrail
- Manufactured by investment casting
- No weld rail connections
- Fast on-site assembly
- No exposed tube cuts

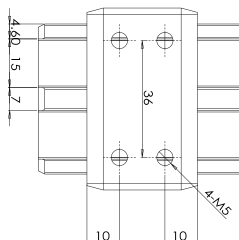
Dimensions	Materials	Testing	Order Codes	Packaging
Length 104mm Height 16mm Width 56mm	316 Stainless Steel to ASTM A890	n/a	B5010P-HGT ADJ-P Mirror Polish B5010P-HGT ADJ-S Brushed Satin	Inner plastic sleeve & cardboard box Outer carton cardboard Shipping crate plywood base HD cardboard shipping sleeve

50X10MM SYSTEM

BALUSTRADE MODULAR JOINER



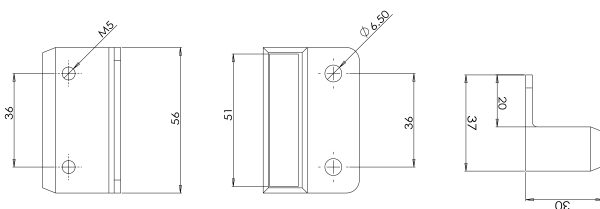
B5010P-JNR



Specifications

- For use with 50x10mm handrail
- Manufactured by investment casting
- No weld rail connections
- Fast on-site assembly

Dimensions	Materials	Testing	Order Codes	Packaging
Length 122mm Height 16mm Width 56mm	316 Stainless Steel to ASTM A890	n/a	B5010-JNR-P Mirror Polish B5010-JNR-P Brushed Satin	Inner plastic sleeve & cardboard box Outer carton cardboard Shipping crate plywood base HD cardboard shipping sleeve

**Specifications**

- For use with 50x10mm handrail
- Manufactured by investment casting
- No weld rail connections
- Fast on-site assembly
- No exposed tube cuts

Dimensions	Materials	Testing	Order Codes	Packaging
Length 30mm Height 37mm Width 56mm	316 Stainless Steel to ASTM A890	n/a	B5010P-WALL-P Mirror Polish B5010PWALL-S Brushed Satin	Inner plastic sleeve & cardboard box Outer carton cardboard Shipping crate plywood base HD cardboard shipping sleeve

25MM ROUND SYSTEM

SLOT RAIL

RAIL-25 ROUND



**Specifications**

- Superior quality coil for higher quality surface finish
- Precision roll forming for dimensional accuracy
- Precision welding for higher strength
- Uniform automated polishing
- Available in mirror and brushed satin finishes

Dimensions	Materials	Testing	Order Codes	Packaging
Diameter 25mm Slot 14x14mm Wall Thickness 1.2mm	316 Stainless Steel to ASTM A554	ASNZ1288-2006	RAIL-25 ROUND-P RAIL-25 ROUND-S	Plastic wrapping Cardboard sleeve

25MM ROUND SYSTEM

TOP MOUNT RAIL END CAP

B25RND END



**Specifications**

- Manufactured by investment casting
- Modular no weld rail connection
- Fast on-site installation
- Available in mirror and brushed satin finishes

Dimensions	Materials	Testing	Order Codes	Packaging
Length 71mm Thickness 16mm Rail Slot 50X10mm	316 Stainless Steel to ASTM A554	n/a	B25RND END CAP-P B25RND END CAP-S	Inner plastic sleeve & cardboard box Outer carton cardboard Shipping crate plywood base HD cardboard shipping sleeve

25MM ROUND SYSTEM

TOP MOUNT RAIL SLOTTED END CAP

B25RND END SLOT



**Specifications**

- Manufactured by investment casting
- Modular no weld rail connection
- Fast on-site installation
- Available in mirror and brushed satin finishes

Dimensions	Materials	Testing	Order Codes	Packaging
	316 Stainless Steel to ASTM A554	n/a	B5010-ADJ CRN-P Mirror Polish B5010-ADJ CRN-P Brushed Satin	Inner plastic sleeve & cardboard box Outer carton cardboard Shipping crate plywood base HD cardboard shipping sleeve

## 25MM ROUND SYSTEM

## TOP MOUNT RAIL WALL TIE

### B25RND WALL TIE



#### Specifications

- Manufactured by investment casting
- Modular no weld rail connection
- Fast on-site installation
- Available in mirror and brushed satin finishes

Dimensions	Materials	Testing	Order Codes	Packaging
	316 Stainless Steel to ASTM A554	n/a	B25RND WALL TIE-P B25RND WALL TIE-S	Inner plastic sleeve & cardboard box Outer carton cardboard Shipping crate plywood base HD cardboard shipping sleeve

## 25MM ROUND SYSTEM

## TOP MOUNT RAIL ADJUSTABLE CORNER

### B25RND-CRN ADJ



#### Specifications

- Manufactured by investment casting
- Modular no weld rail connection
- Fast on-site installation
- Available in mirror and brushed satin finishes

Dimensions	Materials	Testing	Order Codes	Packaging
	316 Stainless Steel to ASTM A554	n/a	B25RND-CRN ADJ-P B25RND-CRN ADJ-S	Inner plastic sleeve & cardboard box Outer carton cardboard Shipping crate plywood base HD cardboard shipping sleeve

## 25MM ROUND SYSTEM

## TOP MOUNT RAIL CORNER

### B25RND-CRN



#### Specifications

- Manufactured by investment casting
- Modular no weld rail connection
- Fast on-site installation
- Available in mirror and brushed satin finishes

Dimensions	Materials	Testing	Order Codes	Packaging
Length 30mm Height 37mm Width 96mm	316 Stainless Steel to ASTM A554	n/a	B25RND-CRN-P B25RND-CRN-S	Inner plastic sleeve & cardboard box Outer carton cardboard Shipping crate plywood base HD cardboard shipping sleeve

25MM ROUND SYSTEM

TOP MOUNT RAIL ADJUSTABLE UP/DOWN



B25RND-HGT ADJ



**Specifications**

- Manufactured by investment casting
- Modular no weld rail connection
- Fast on-site installation
- Available in mirror and brushed satin finishes

Dimensions	Materials	Testing	Order Codes	Packaging
	316 Stainless Steel to ASTM A554	n/a	B25RND-ADJ HGT-P B25RND-ADJ HGT-S	Inner plastic sleeve & cardboard box Outer carton cardboard Shipping crate plywood base HD cardboard shipping sleeve

25MM ROUND SYSTEM

TOP MOUNT RAIL JOINER



B25RND-JNR



**Specifications**

- Manufactured by investment casting
- Modular no weld rail connection
- Fast on-site installation
- Available in mirror and brushed satin finishes

Dimensions	Materials	Testing	Order Codes	Packaging
	316 Stainless Steel to ASTM A554	n/a	B25RND-JNR-P B25RND-JNR-S	Inner plastic sleeve & cardboard box Outer carton cardboard Shipping crate plywood base HD cardboard shipping sleeve



## 25X21MM SQUARE SYSTEM

## SLOT RAIL

## RAIL-25 SQUARE



## Specifications

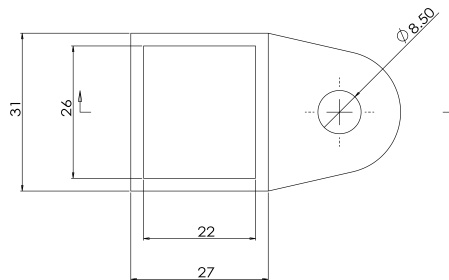
- Superior quality coil for higher quality surface finish
- Precision roll forming for dimensional accuracy
- Precision welding for higher strength
- Uniform automated polishing
- Available in mirror and brushed satin finishes

Dimensions	Materials	Testing	Order Codes	Packaging
Width 25mm Height 21mm Slot 14x14mm Wall Thickness 1.2mm	316 Stainless Steel to ASTM A554	ASNZ1288-2006	RAIL-25 SQUARE-P RAIL-25 SQUARE-S	Plastic wrapping Cardboard sleeve

## 25X21MM SQUARE SYSTEM

## TOP MOUNT RAIL WALL TIE

## B25SQ-WALL



## Specifications

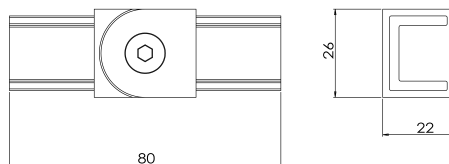
- Manufactured by investment casting
- Modular no weld rail connection
- Fast on-site installation
- Available in mirror and brushed satin finishes

Dimensions	Materials	Testing	Order Codes	Packaging
	316 Stainless Steel to ASTM A554	n/a	B25SQ-WALL-P B25SQ-WALL-S	Inner plastic sleeve & cardboard box Outer carton cardboard Shipping crate plywood base HD cardboard shipping sleeve

## 25X21MM SQUARE SYSTEM

## TOP MOUNT RAIL ADJUSTABLE CORNER

## B25SQ-CRN ADJ



## Specifications

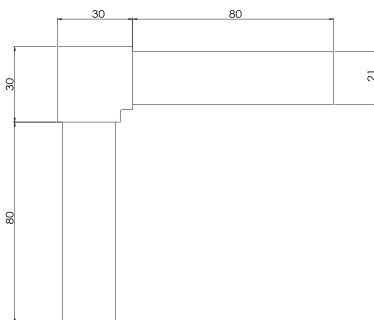
- Manufactured by investment casting
- Modular no weld rail connection
- Fast on-site installation
- Available in mirror and brushed satin finishes

Dimensions	Materials	Testing	Order Codes	Packaging
	316 Stainless Steel to ASTM A554	n/a	B25SQ-CRN ADJ-P B25SQ-CRN ADJ-S	Inner plastic sleeve & cardboard box Outer carton cardboard Shipping crate plywood base HD cardboard shipping sleeve

## 25X21MM SQUARE SYSTEM

## TOP MOUNT RAIL CORNER

B25SQ-CRN



### Specifications

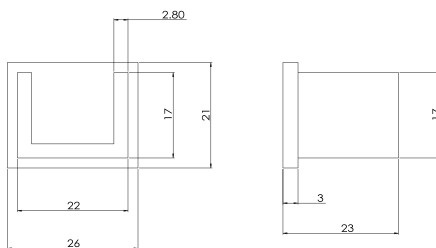
- Manufactured by investment casting
- Modular no weld rail connection
- Fast on-site installation
- Available in mirror and brushed satin finishes

Dimensions	Materials	Testing	Order Codes	Packaging
	316 Stainless Steel to ASTM A554	n/a	B25SQ-CRN-P B25SQ-CRN-S	Inner plastic sleeve & cardboard box Outer carton cardboard Shipping crate plywood base HD cardboard shipping sleeve

## 25X21MM SQUARE SYSTEM

## TOP MOUNT RAIL END CAP

B25SQ-END



### Specifications

- Manufactured by investment casting
- Modular no weld rail connection
- Fast on-site installation
- Available in mirror and brushed satin finishes

Dimensions	Materials	Testing	Order Codes	Packaging
	316 Stainless Steel to ASTM A554	n/a	B25SQ-END-P B25SQ-END-S	Inner plastic sleeve & cardboard box Outer carton cardboard Shipping crate plywood base HD cardboard shipping sleeve

## 25X21MM SQUARE SYSTEM

## TOP MOUNT RAIL SLOTTED END CAP

B25SQ-END SLOT



### Specifications

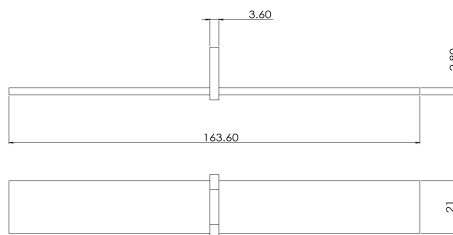
- Manufactured by investment casting
- Modular no weld rail connection
- Fast on-site installation
- Available in mirror and brushed satin finishes

Dimensions	Materials	Testing	Order Codes	Packaging
	316 Stainless Steel to ASTM A554	n/a	B25SQ-END SLOT-P B25SQ-END SLOT-S	Inner plastic sleeve & cardboard box Outer carton cardboard Shipping crate plywood base HD cardboard shipping sleeve

## 25X21MM SQUARE SYSTEM

## TOP MOUNT RAIL JOINER

B25SQ-JNR



### Specifications

- Manufactured by investment casting
- Modular no weld rail connection
- Fast on-site installation
- Available in mirror and brushed satin finishes

Dimensions	Materials	Testing	Order Codes	Packaging
	316 Stainless Steel to ASTM A554	n/a	B25SQ-JNR-P B25SQ-JNR-S	Inner plastic sleeve & cardboard box Outer carton cardboard Shipping crate plywood base HD cardboard shipping sleeve

## 25X21MM SQUARE SYSTEM

## TOP MOUNT RAIL ADJUSTABLE UP/DOWN

B25SQ-HGT ADJ



### Specifications

- Manufactured by investment casting
- Modular no weld rail connection
- Fast on-site installation
- Available in mirror and brushed satin finishes

Dimensions	Materials	Testing	Order Codes	Packaging
	316 Stainless Steel to ASTM A554	n/a	B25SQ-HGT ADJ-P B25SQ-HGT ADJ-S	Inner plastic sleeve & cardboard box Outer carton cardboard Shipping crate plywood base HD cardboard shipping sleeve

42.4MM ROUND SYSTEM

SLOT RAIL

RAIL-42.4 SLOT



**Specifications**

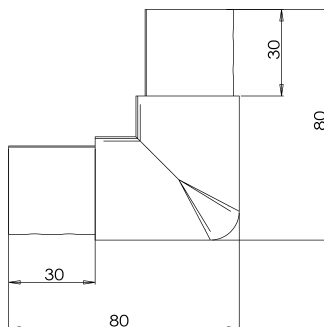
- Superior quality coil for higher quality surface finish
- Precision roll forming for dimensional accuracy
- Precision welding for higher strength
- Uniform automated polishing
- Available in mirror and brushed satin finishes

Dimensions	Materials	Testing	Order Codes	Packaging
Diameter 42.4mm Slot 24x24mm Wall Thickness 1.5mm	316 Stainless Steel to ASTM A554	ASNZ1288-2006	RAIL-42.4 SLOT-P RAIL-42.4 SLOT-S	Plastic wrapping Cardboard sleeve

42.4MM ROUND SYSTEM

U-CHANNEL 90° UP

B42.4-90°UP



**Specifications**

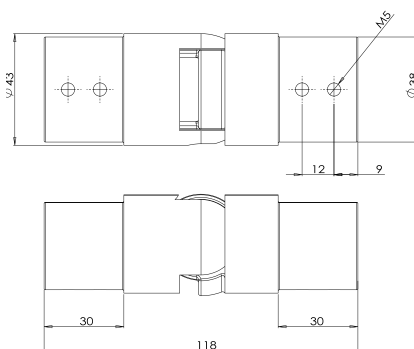
- For use with 42.4mm slot rail
- Manufactured by investment casting
- No weld rail connections
- Fast on-site assembly

Dimensions	Materials	Testing	Order Codes	Packaging
Length 80mm Height 80mm Diameter 43mm	316 Stainless Steel to ASTM A890	n/a	B42.4-90°UP-P Mirror Polish B42.4-90°UP-S Brushed Satin	Inner plastic sleeve & cardboard box Outer carton cardboard Shipping crate plywood base HD cardboard shipping sleeve

42.4MM ROUND SYSTEM

U-CHANNEL ADJUSTABLE DOWN

B42.4-ADJ DWN



**Specifications**

- Manufactured by investment casting
- Modular no weld rail connection
- Fast on-site installation
- Available in mirror and brushed satin finishes

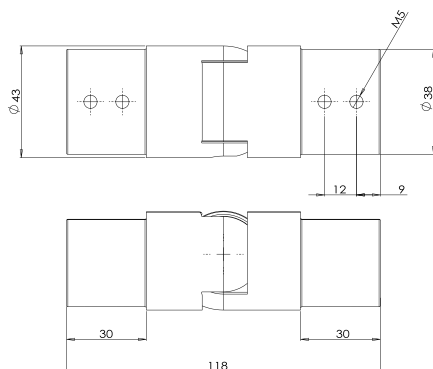
Dimensions	Materials	Testing	Order Codes	Packaging
Length 118mm Diameter 43mm	316 Stainless Steel to ASTM A89	n/a	B42.4-ADJ DWN-P Mirror Polish B42.4-ADJ DWN-S Brushed Satin	Inner plastic sleeve & cardboard box Outer carton cardboard Shipping crate plywood base HD cardboard shipping sleeve

## 42.4MM ROUND SYSTEM

## U-CHANNEL ADJUSTABLE UP



### B42.4-ADJ UP



#### Specifications

- For use with 42.4mm slot rail
- Manufactured by investment casting
- No weld rail connections
- Fast on-site assembly

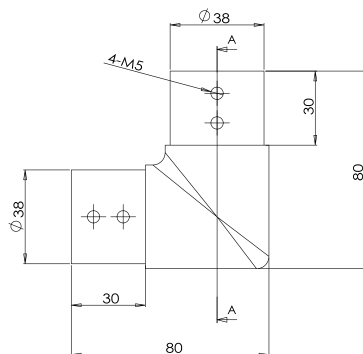
Dimensions	Materials	Testing	Order Codes	Packaging
Length 118mm Diameter 43mm	316 Stainless Steel to ASTM A890	n/a	B42.4-ADJ UP-P Mirror Polish B42.4-ADJ UP-S Brushed Satin	Inner plastic sleeve & cardboard box Outer carton cardboard Shipping crate plywood base HD cardboard shipping sleeve

## 42.4MM ROUND SYSTEM

## U-CHANNEL 90° CORNER



### B42.4-CNR



#### Specifications

- Manufactured by investment casting
- Modular no weld rail connection
- Fast on-site installation
- Available in mirror and brushed satin finishes

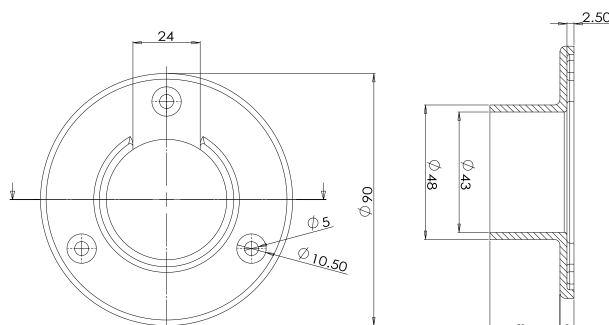
Dimensions	Materials	Testing	Order Codes	Packaging
Length 80mm Diameter 43mm	316 Stainless Steel to ASTM A890	n/a	B42.4-CRN-P Mirror Polish B42.4-CRN-S Brushed Satin	Inner plastic sleeve & cardboard box Outer carton cardboard Shipping crate plywood base HD cardboard shipping sleeve

## 42.4MM ROUND SYSTEM

## U-CHANNEL WALL TIE



### B42.4-WALL



#### Specifications

- For use with 42.4mm slot rail
- Manufactured by investment casting
- No weld rail connections
- Fast on-site assembly

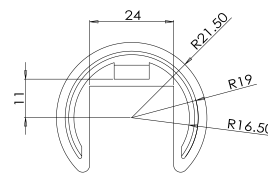
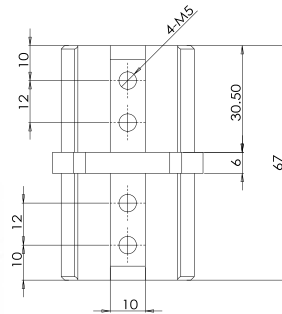
Dimensions	Materials	Testing	Order Codes	Packaging
Diameter 90mm Width 48mm	316 Stainless Steel to ASTM A890	n/a	B542.4-WALL-P Mirror Polish B542.4-WALL-S Brushed Satin	Inner plastic sleeve & cardboard box Outer carton cardboard Shipping crate plywood base HD cardboard shipping sleeve

42.4MM ROUND SYSTEM

U-CHANNEL JOINER



B42.4-JNR



**Specifications**

- For use with 42.4mm slot rail
- Manufactured by investment casting
- No weld rail connections
- Fast on-site assembly

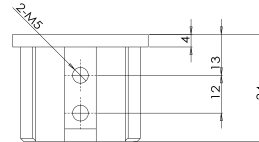
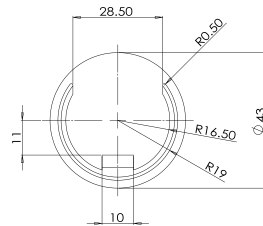
Dimensions	Materials	Testing	Order Codes	Packaging
Length 67mm Diameter 43mm	316 Stainless Steel to ASTM A890	n/a	B42.4-JNR-P Mirror Polish B42.4-JNR-S Brushed Satin	Inner plastic sleeve & cardboard box Outer carton cardboard Shipping crate plywood base HD cardboard shipping sleeve

42.4MM ROUND SYSTEM

U-CHANNEL RAIL END CAP



B42.4-END



**Specifications**

- For use with 42.4mm slot rail
- Manufactured by investment casting
- No weld rail connections
- Fast on-site assembly

Dimensions	Materials	Testing	Order Codes	Packaging
	316 Stainless Steel to ASTM A890	n/a	B42.4-END-P Mirror Polish B42.4-END-S Brushed Satin	Inner plastic sleeve & cardboard box Outer carton cardboard Shipping crate plywood base HD cardboard shipping sleeve





[www.exaktglass.com](http://www.exaktglass.com)

---

**Head Office**

Exakt Group  
PO Box 6660  
Melbourne 3004  
Australia

Email : [info@exaktgroup.com](mailto:info@exaktgroup.com)

Phone : +61 417 987 404

---

**Melbourne**

+61 3 8400 4700

**Auckland**

+64 9 801 0554

**New York**

+1 408 215 9396

**Los Angeles**

+1 213 559 7201

**Vancouver**

+1 778 650 5245

**London**

+44 20 3695 4912

---

**Disclaimer:** Drawings are not to scale and are for representation only. While all care is taking in the production of this catalogue, elements of it are provided as indicative guides only. Exakt Group is not responsible for the outcome of any installation using these guides. Exakt Group does not provide engineering advice on any installation situation and it is the installer's responsibility to seek any compliance and or certification where required. All rights are reserved in relation to this matter.

© Exakt Glass 2016.